

Jefferson Audio Video Evidence Presentation System

Overview:

The **JAVS Evidence Presentation System** is a fully integrated, remote-controllable system designed to efficiently and accurately display audio and video evidence to the court.

- Video to the jury is displayed on a screen from a high light output LCD projector. The judge and the law tables have 15" flat-panel monitors. The witness has a 15" flat panel monitor with annotation capability. The lectern has a 17" flat panel monitor for annotation.
- No video will be displayed to the jury or the law tables until the judge switches on the video. The video will always be displayed to the judge and the lectern monitor.

Video annotation is used so either the witness or the lectern monitor can be drawn on to highlight pertinent sections of the video being displayed. This video can then be printed on the video printer for a permanent record.

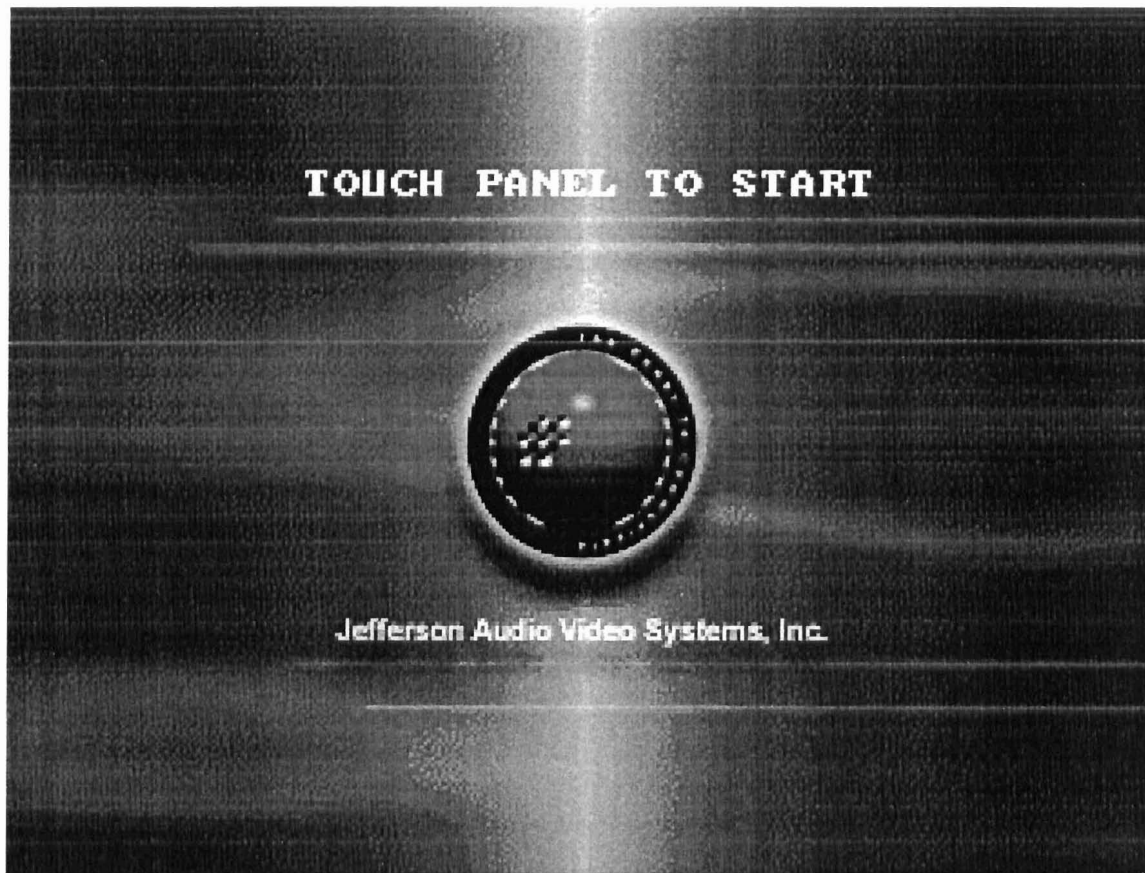
- To display physical evidence a high resolution VGA video document camera is used.

A VHS VCR is used for videotape playback. This video can also be annotated and printed. Audio is feed to the lectern and the courtroom PA speakers.

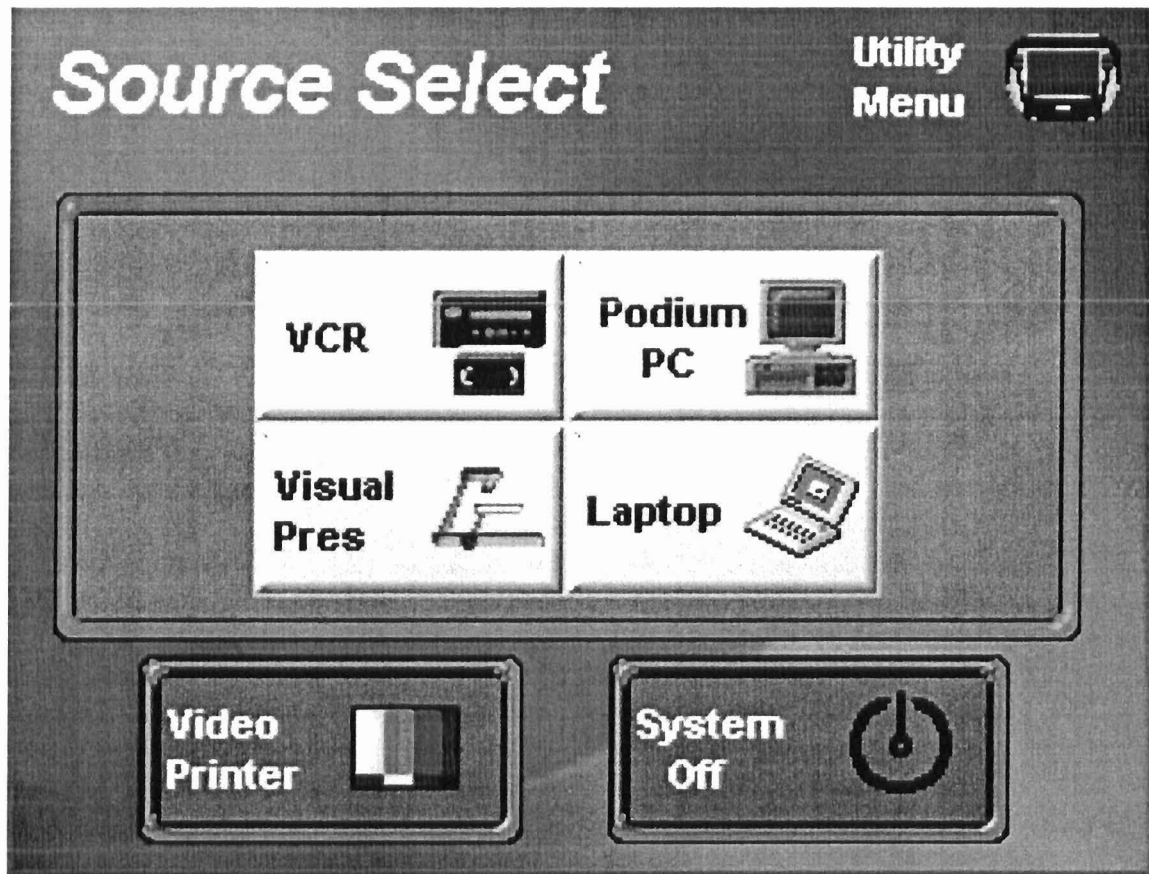
- A PC with a 3 1/2" floppy and a CD/DVD drive is used to display any data evidence.
- The microphone at the front of the lectern is fed to speakers in the lectern and to the courtroom PA system.

Provision is made so that an external computer can be connected to the system.

To begin using the **JAVS Evidence Presentation System**, simply touch the screen on the remote control panel.



If there is nothing displayed on the remote control screen, simply touch the screen to begin. The above screen will be displayed. Touch the screen again to enter the "Select Source" menu.

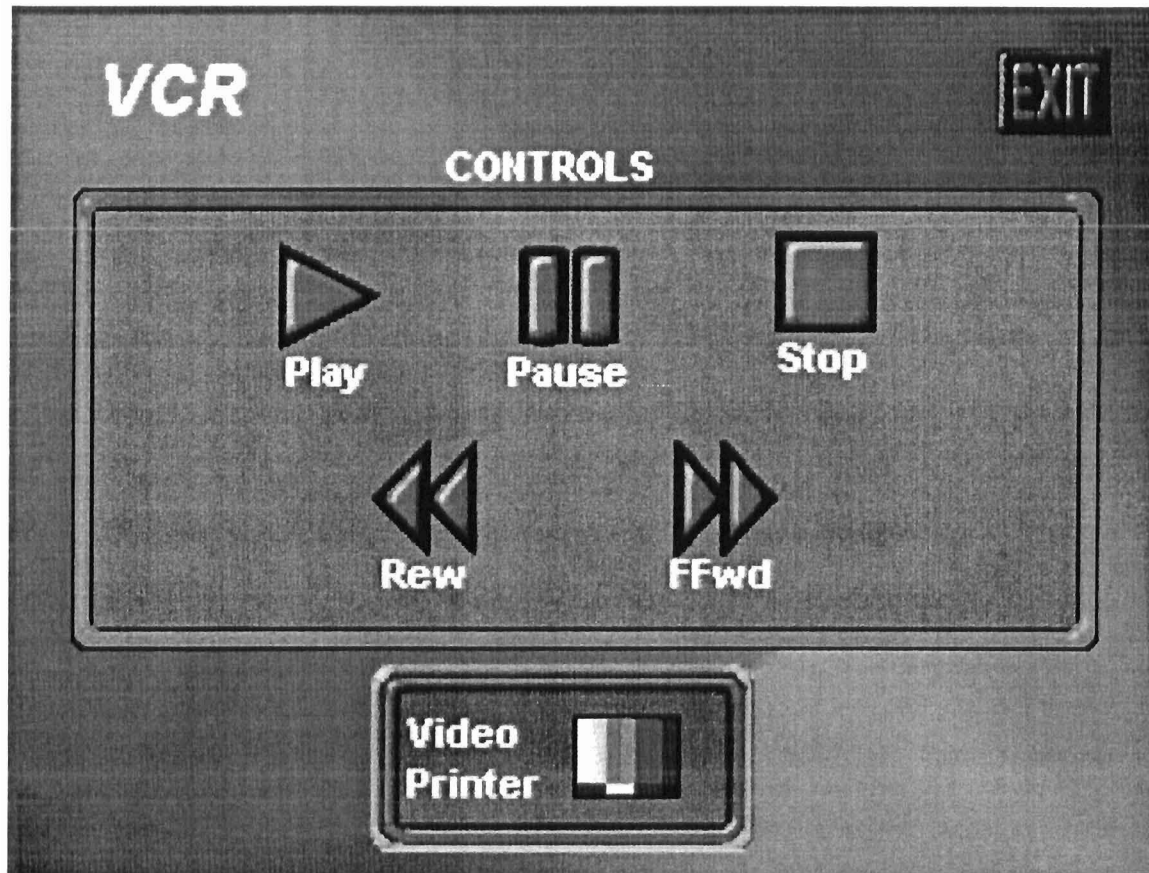


From this menu the video sources can be selected for display.

Touch the screen to select the desired video source. The icon for the selected source becomes highlighted and the menu changes. When the VCR, Laptop, Podium PC, or Visual Pres icon is selected the projector is powered on and the projection screen is lowered.

Note that no video will be displayed on the witness monitor, law table monitors, or the projector screen until the judge switches these on.

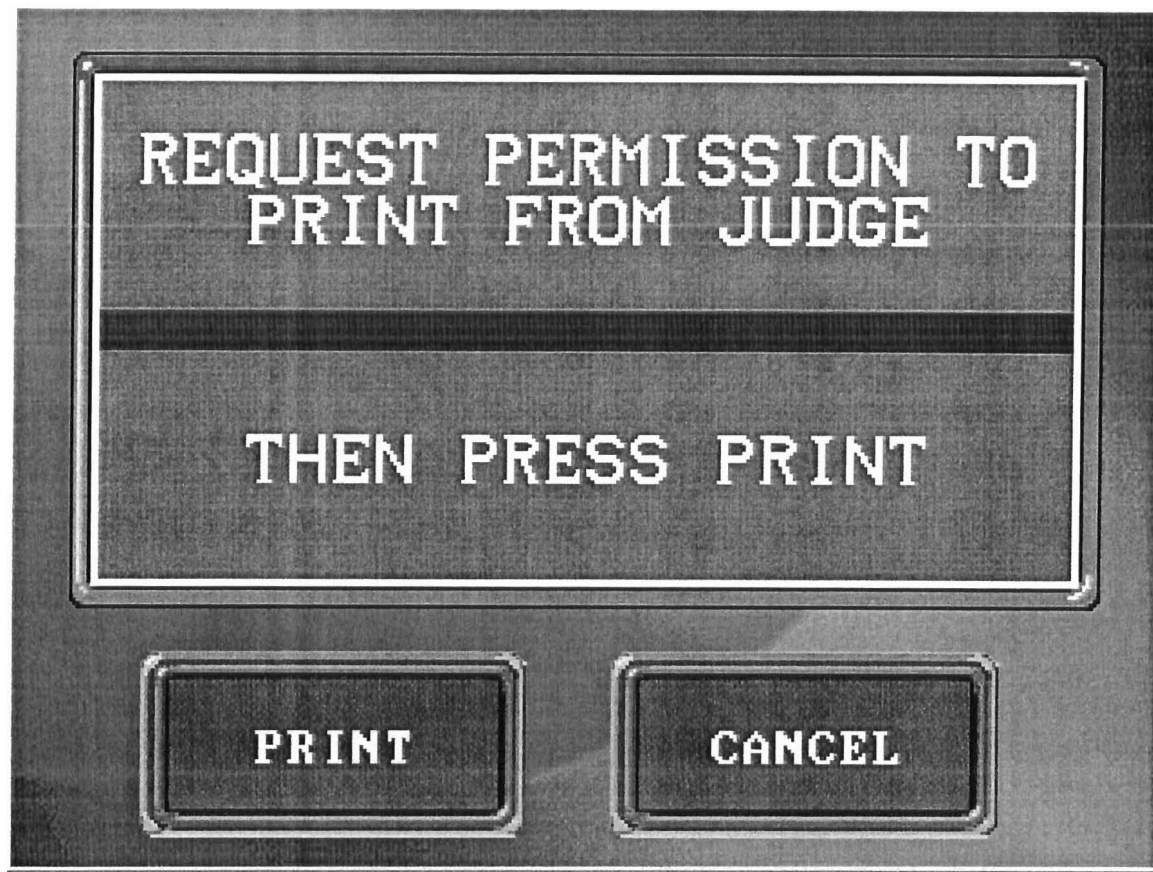
The following pages show the menus for each video source.



Touch the appropriate icon on the remote control screen to control the videotape in the VCR.

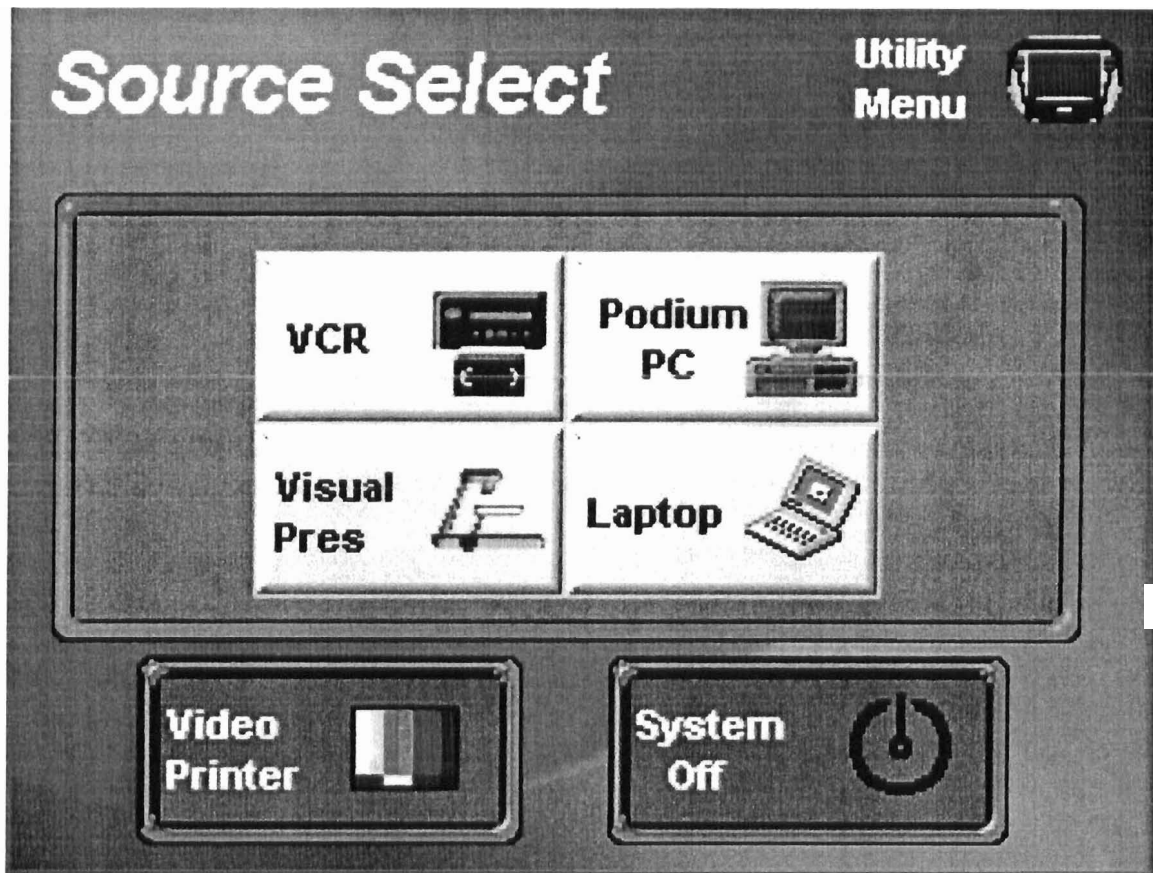
Touch the “Exit” icon to return to the “Select Source” menu.

To print a hard copy of an image from the videotape, press the “Pause” button and touch the “Video Printer” icon. The “Video Printer” menu will appear.



After the judge gives permission to print, press the "PRINT" icon. The printer will print and the remote panel will return to the previous menu.

If you choose not to print, touch the "CANCEL" icon to return to the previous menu.

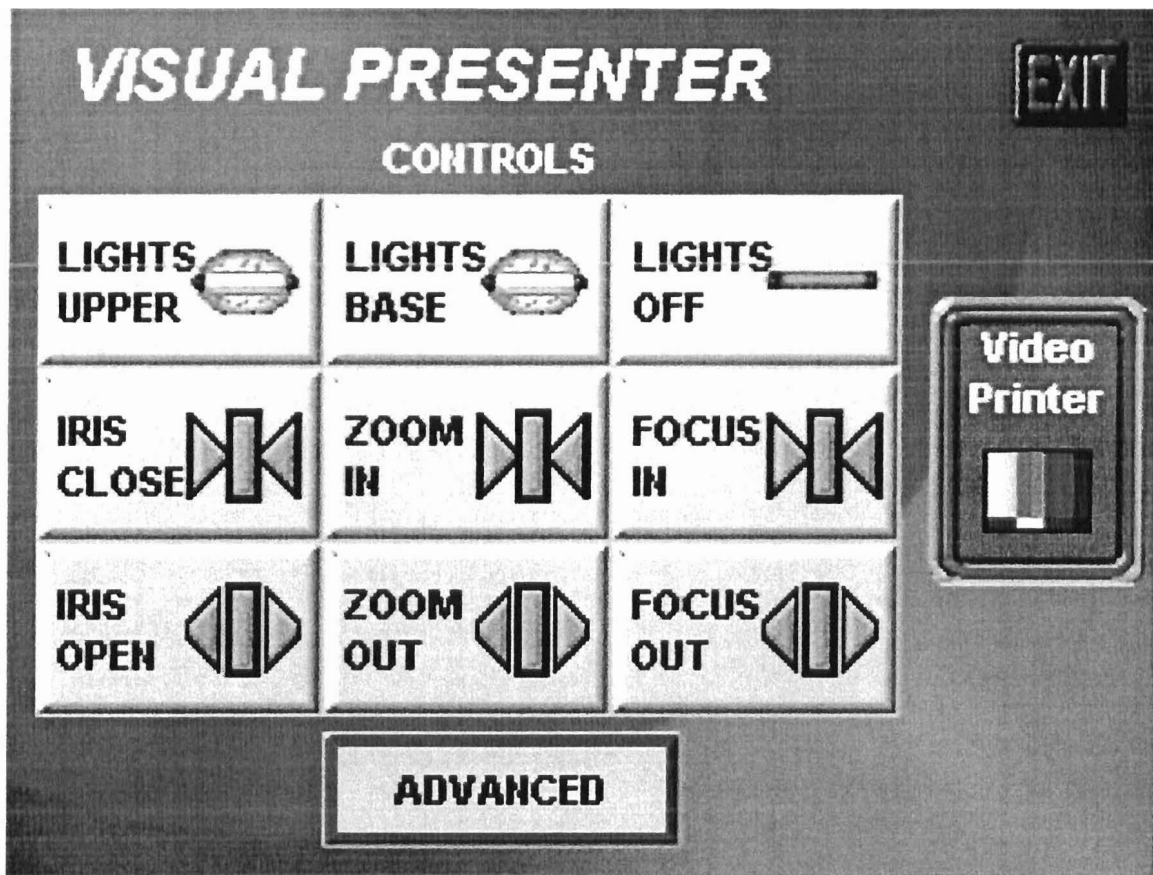


To view a laptop computer connect the supplied VGA and audio cable to the laptop.

Press the "Laptop" icon.

If the video does not appear on the screen confirm the laptop's video port is turned on and/or reduce the laptop resolution to no more than 1024 x 768.

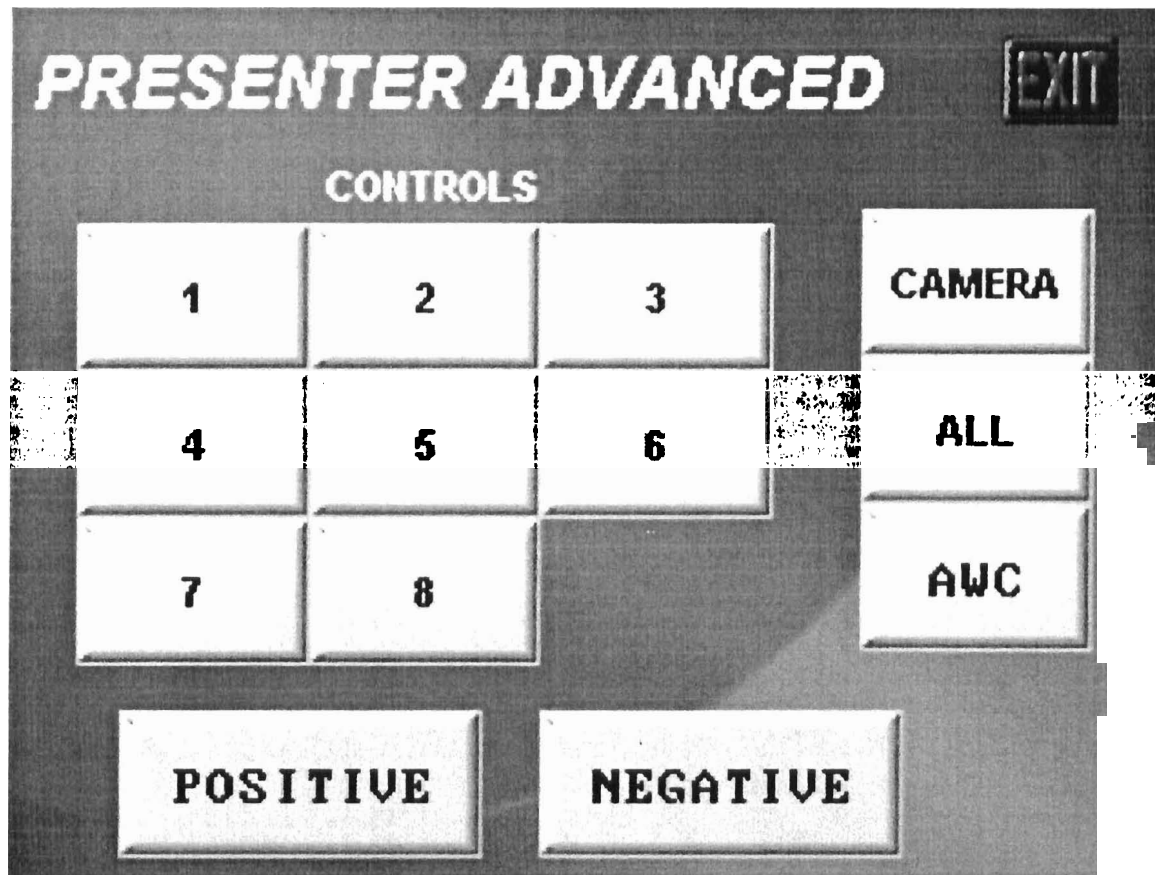
To make a print follow the same procedures in printing from the VCR.



Press the “Visual Pres” icon on the “Select Source” menu to display the document camera. The document camera menu “VISUAL PRESENTER” will appear. Press the appropriate icon to control the camera.

To return to the main screen, touch “EXIT”.

To save and recall images and select positive or negative images, go to the advanced menu by touching the “ADVANCED” icon.



The above screen is the advanced menu of the “Visual Presenter”. From this menu up to 8 pictures can be stored in memory and recalled, a positive or negative image selected, and the camera image rotated.

To store a picture into memory:

Viewing the lectern monitor or the projector screen adjust the document camera for proper sizing and focus of the image to be put into memory. Press any number (1-8) where the picture is to be stored. Keep pressing the number until a prompt appears over the video confirming that the picture is stored at this location.

Touching the “ALL” icon will display all 8-memory locations on the monitor screens.

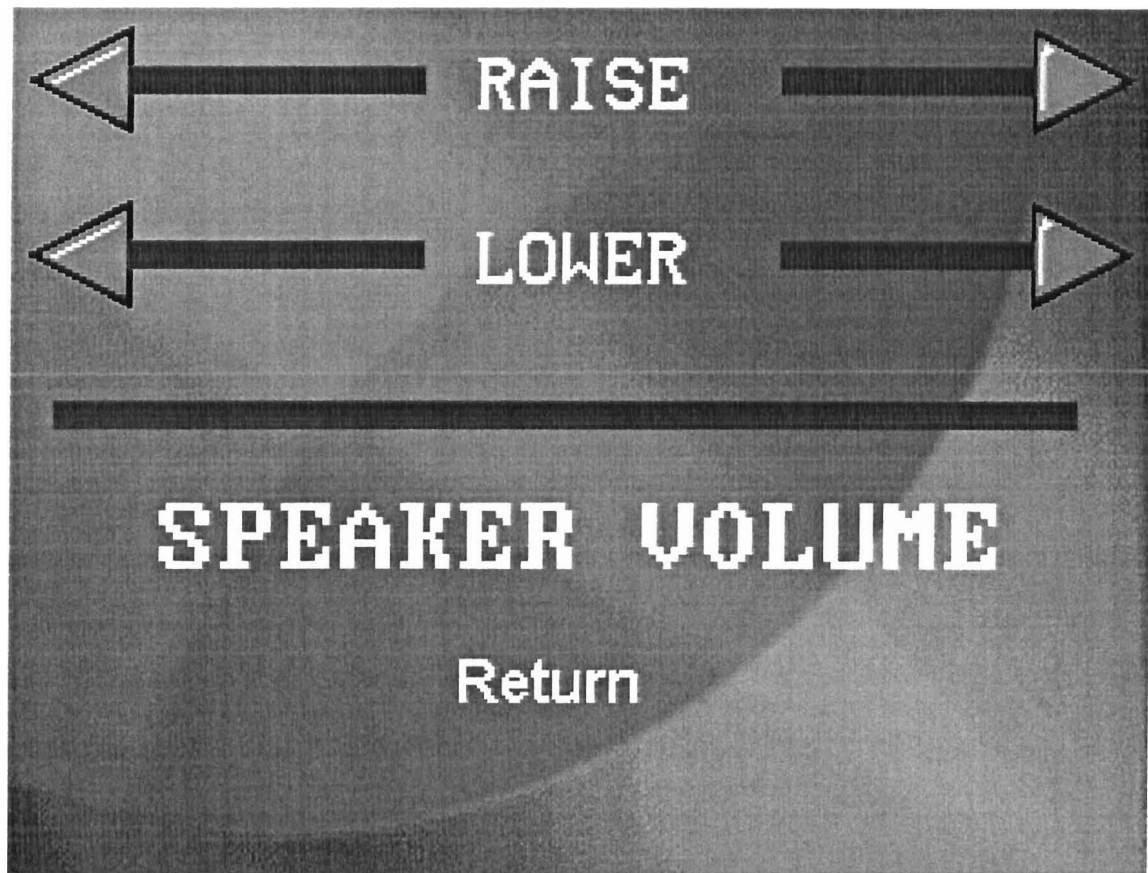
To display a picture from memory press the appropriate number.

Press the “CAMERA” icon to exit the memory and return to the video from the document camera.

To rotate the camera image in 90 degree increments press the “ROTATE” icon.

Use the “POSITIVE” and “NEGATIVE” icons to change video polarity.

Use the “EXIT” icon to return to the previous menu.



The audio level from the lectern speakers and from the lectern to the courtroom PA system is controlled by the raised buttons on either side of the remote control panel. Pressing any of these buttons will display the “SPEAKER VOLUME” menu. Press the appropriate button to raise or lower the audio from the lectern speakers and the courtroom PA.

Touch “Return” to return to the previous menu.

Annotation on the Witness and Lectern Monitors

The witness monitor is a 15" flat panel with annotation capability. To annotate, press on the screen and draw.

To change the line color, touch the screen within 1" of the lower left corner.

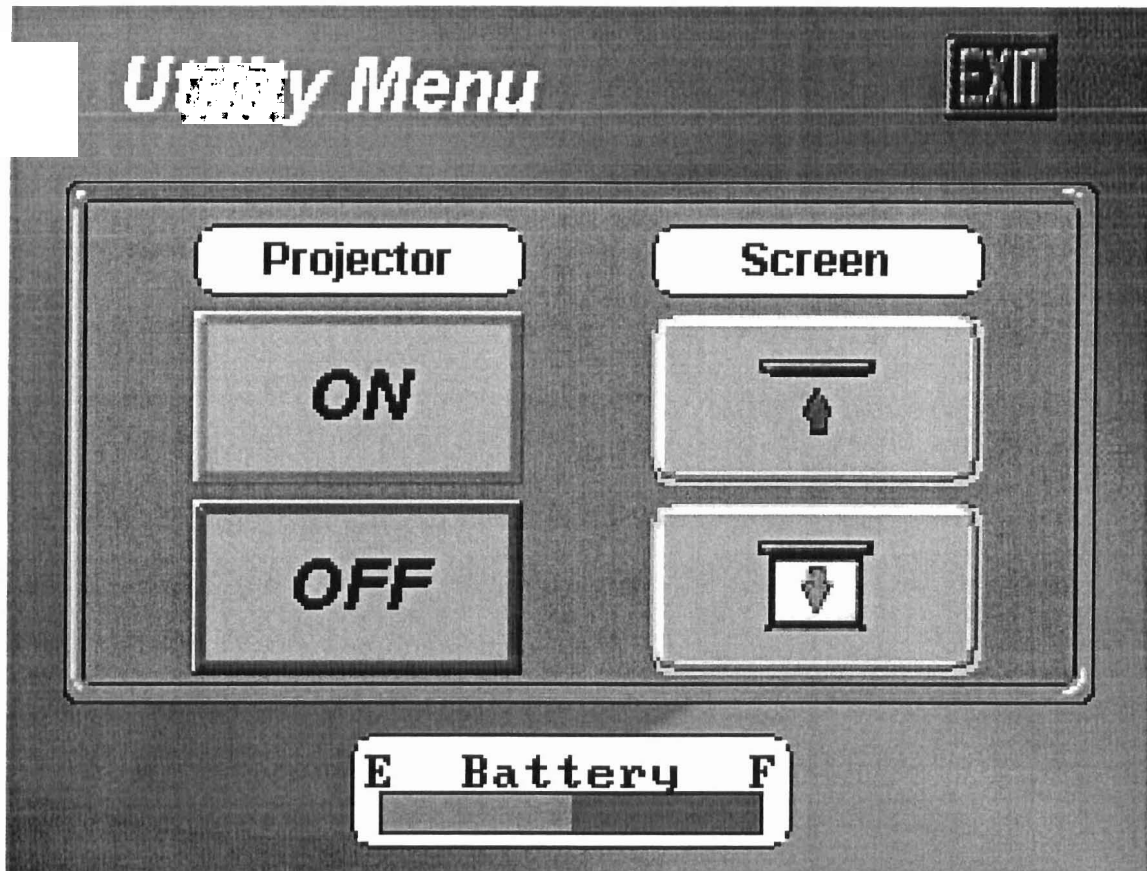
To erase the last line drawn, press the screen within 1" of the upper right corner.

To erase all annotation, touch the screen within 1" of the lower right corner.

To access the Pointmaker menu to change line styles, pointer options, and to enter the calibration mode touch the top of the screen at the center.

Annotation on the 17" lectern monitor is the same as the witness monitor.

Note that lines drawn on one monitor can be erased from the other.



From the Utility Menu:

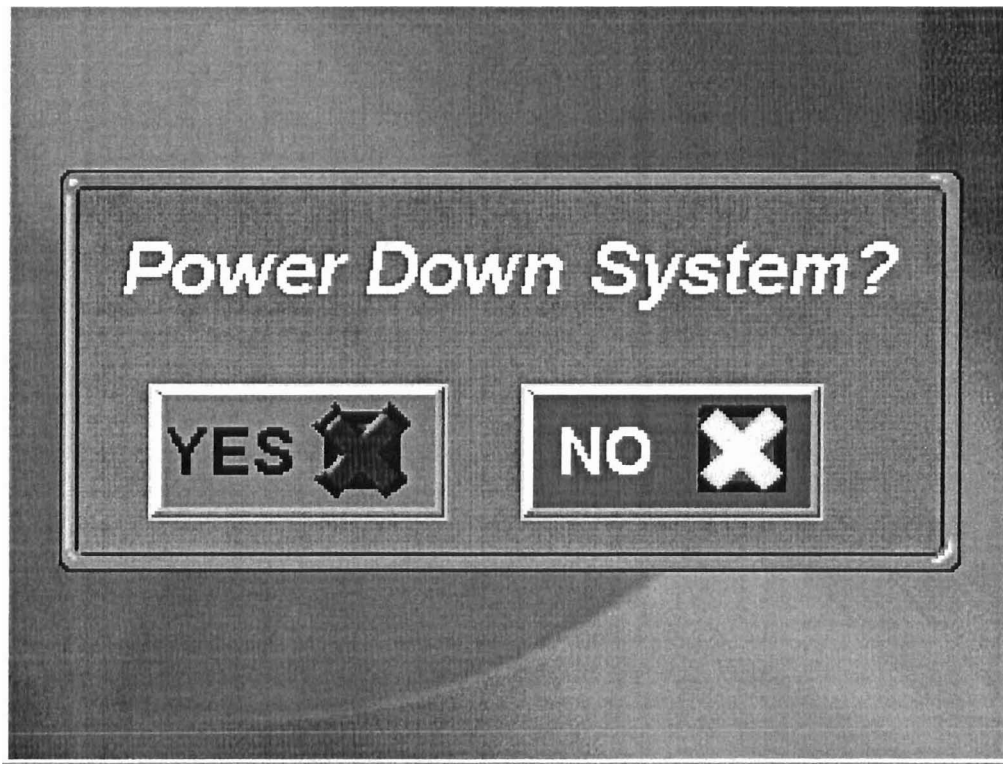
The projector can be powered on and off

The projection screen can be lowered and raised

The charge on the remote control battery can be monitored

To turn the system off (the projector is powered down, the screen is raised, the document camera is turned off, and the "Source Select" menu is cleared) select the "System Off" icon on the "Source Select" page.

The menu below will appear.



Touch "YES" to power the system down.

The remote panel will return to the logo page.

After 15 minutes the remote panel will enter a battery saving mode and go dark.